



LINWOOD
TRAINING, SUPPORT & ADVICE

LINWOOD SCHOOL NEWSLETTER

MAY 2026

OUR VALUES

- Respect
- Trust
- Responsibility
- Harmony
- Excellence
- Support
- Inclusivity
- Positivity





MESSAGE FROM GEMMA TALBOT, EXECUTIVE HEADTEACHER

What a busy term we have had! This term has been filled with hard work, achievements and many wonderful moments across our school community.

Some of our students submitted artwork for the Royal Academy of Arts Young Artists Exhibition and three of our entries have been accepted – please take a look on page 4 for more information!

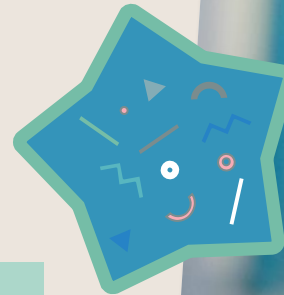
We had our Year 6 Avon Tyrrell residential trip this term which was a huge success. The students took part in so many activities that they had never tried before and were incredibly brave!

We hope you all have a wonderful half term and enjoy the sunshine that has been forecast!

REMINDER – START OF TERM/END OF TERM

Just a reminder that the students return on **Monday 1st June 2026** across all campuses after the May half term.

Term ends for the summer holidays on Wednesday 22 July 2026.



SUMMERWOOD CAMPUS – SUMMER TERM HIGHLIGHTS

BCP STUDENT VOICE ON SEND

On Friday 17th April, Summerwood was visited by Jo Fry and Terry Husher from BCP. They were keen to gather the views of Summerwood students regarding special educational needs and disabilities, as part of the local authority's response to the SEND White Paper.

The students were brilliant at expressing their views and answering a wide range of questions relating to the provision they currently receive and how this could be improved in the future.

Terry emailed us after the event to say, *"It was a fantastic way to go into the weekend. What an incredible and welcoming environment you have—thank you!"*

Both the students and BCP are keen to continue working together to ensure that student voices are heard on important issues that affect their provision.

JP MORGAN – MEET THE EMPLOYER

Summerwood hosted two employees from JP Morgan on Monday 20th April. They delivered a presentation to students about the history and work of Chase and JP Morgan.

Students were also able to experience what it would be like to work there through a virtual tour of the Bournemouth site. It was fascinating to see the extensive facilities available to employees, as well as the wide range of job roles—from site management and beekeeping to account management, and many more.

In addition, four JP Morgan employees run a Coding Club for Summerwood students every Thursday from 3.30–4.30pm. The club is very well attended, and students have learned a great deal about using Scratch coding software.



SAMEE Project Visit

The SAMEE project visited Summerwood on 30th April.



This programme supports young people in developing the skills and confidence needed to set up their own business.

A range of existing projects was shared with the students, and the presentation was both engaging and informative. Students also had the opportunity to explore their own ideas and consider possible business ventures for the future.

Resilience in Unity

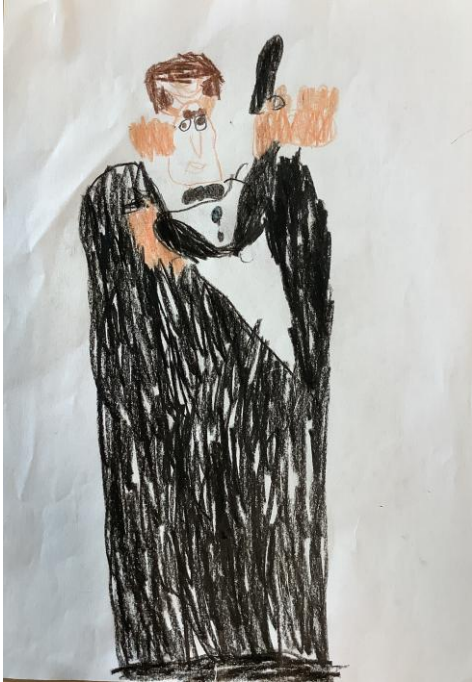
Summerwood had the opportunity to spend a morning with Ross and Bill from Resilience in Unity, a UK-based non-profit counter-extremism organisation focused on preventing radicalisation and supporting those affected by terrorism. Ross and Bill delivered a highly engaging workshop, giving students the opportunity to explore how to stay safe online.

Their personal experiences of online exploitation and neurodiversity contributed to a session that was both impactful and appropriate for students and staff alike.



ROYAL ACADEMY OF ARTS YOUNG ARTISTS EXHIBITION

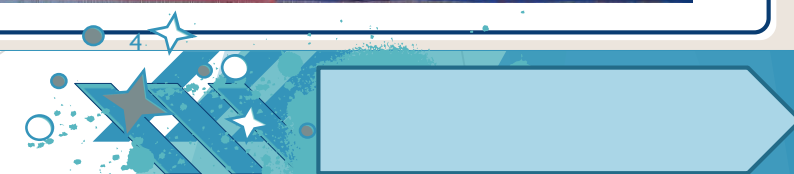
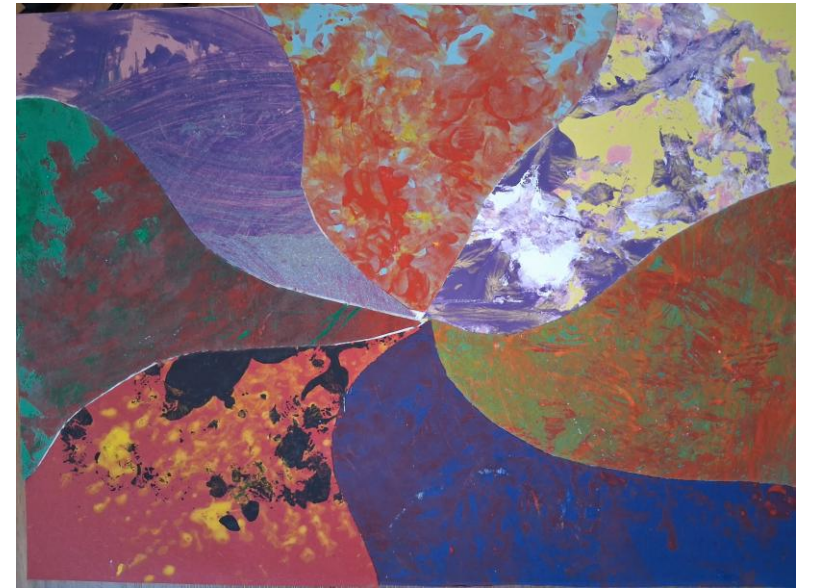
We are extremely excited to share some fantastic news. We have been successful in gaining not one, but three entries accepted into the Royal Academy of Arts Young Artists Exhibition this year.



Dylan C, from Bocelli Class, had his James Bond drawing accepted into the Academy's online exhibition. Squirrels Class also had their sensory process art collaboration accepted for the online exhibition. For the first time ever, we are thrilled to have a piece accepted for the physical exhibition in London. Kian, from Thunberg Class, has had his More Bus creation selected and it will be on public display from 14 July to 30 August, as well as featured online.

We are incredibly proud of our young artists for achieving this national recognition. A huge thank you to all of the students that submitted artwork. Also, thank you to Lyndsay Baker, Art Co-Ordinator for organising the submissions and to those teachers who supported the students and gave them time and encouragement to make this opportunity possible.

If any of our families are visiting London during the summer, please take the time to visit the free exhibition at the Royal Academy, situated a 10-minute walk from Piccadilly Circus tube station.



Date for your diary! More information will be sent out after half term

A vertical poster for a Summer Festival. The top half has a yellow background with a sunset sky and clouds. The text 'Summer Festival' is written in a large, white, cursive font with a yellow outline. Below it, in white sans-serif font, is 'Linwood Campus', 'Friday 3rd July 5:30PM - 7:30PM', '£1 ENTRY PER FAMILY', 'CASH ONLY', 'LIVE MUSIC / FOOD AND REFRESHMENTS', 'STALLS / GAMES', 'COME AND JOIN US', and 'FOR AN EVENING OF MUSIC AND FUN'. The bottom half of the poster shows a beach scene with waves and sand. The address 'Alma Road, Bournemouth Dorset BH9 1AJ' is printed at the bottom.

Summer Festival

Linwood Campus
Friday 3rd July 5:30PM - 7:30PM

£1 ENTRY PER FAMILY

CASH ONLY

LIVE MUSIC / FOOD AND REFRESHMENTS
STALLS / GAMES

COME AND JOIN US
FOR AN EVENING OF MUSIC AND FUN

Alma Road, Bournemouth
Dorset BH9 1AJ

FUTURE OPPORTUNITIES

Over the last few weeks our students have been busy building skills for the future through some fantastic hands-on experiences!

During a recent sensory workshop with LUSH at Springwood Campus students explored textures, scents, and creativity while making their own products. It was a wonderful opportunity to engage the senses, boost confidence, and encourage self-expression in a fun and supportive environment.



We also welcomed JP Morgan at Summerwood for an inspiring session focused on developing employment skills. Please have a look at the Summerwood page for more information.

A huge thank you to both partners, JP Morgan and LUSH for helping our students improve their skills and take meaningful steps toward their futures.

We would also like to extend our thanks to the class teams and Placement Coordinators for supporting the setup of these sessions.



SOUTH COAST MUSIC PARTNERSHIP LEAD SCHOOL

Welcome back to Linwood Radio! If you haven't already, please have a listen to episodes we have recorded this term.

This episode is the long awaited Desert Island Discs special with our very own William Sharpe. Unaccustomed to being on the receiving end of the questions, Will introduces us to five songs that have a special place in his record collection and his heart. He shares his love and passion for the bands and music that have shaped his life and tries not to forget which side of the desk he is sitting on.

[Desert Island Discs with William Sharpe](#)

If you would like to contact the radio please email:
linwoodradio@linwood.Bournemouth.sch.uk



In this episode Will talks to one of our students, Aiden, about his interest in all things media. Aiden chooses to spin a song by Daft Punk, which we will hear more of in future episodes as the theme for our new feature 'Around the World'.



After some short commercial messages, Will and Spencer's song dispenser dispenses a song by The Beatles to close the show.

[Aiden, media and future features](#)



LINWOOD SCHOOL CHARITABLE TRUST

ARE YOU INTERESTED IN BECOMING A TRUSTEE?

WHAT IS THE ROLE OF A TRUSTEE?

The Trustees are dedicated to raising money for the school and ensuring funds are used effectively. We are parents, staff and friends of the school who want to further enhance the education and wellbeing of our children and young people, their families and the wider community. We support the school by providing resources, specialist equipment, support for extra-curricular activities and the development of the learning environment.

CAN I APPLY?

Yes! Anyone can apply to be a trustee.

You don't have to have specific knowledge or qualifications, only a keen interest in raising funds for the school and a willingness to help!

You may want to expand your experience in doing something new and challenging and have a willingness to learn and develop new skills.

WHAT WOULD MY ROLE BE AS A TRUSTEE?

Your role is to bring energy, passion and ideas to raise funds for the school. This could be as simple as an Easter raffle to helping organise events such as a bingo or quiz night. You would be expected to get involved in helping organise our school celebration events, one at Christmas and one in the summer term. This could involve contacting companies and shops and asking for prize donations, helping with the set up and management of the stalls and organising the Raffle, amongst other things! If you have any experience in applying for grants to help fund specific projects, this would also be helpful, but training will be given if you would like to get involved in this.

WHAT'S THE COMMITMENT?

All trustees are asked to fulfil the following:
Attendance at meetings - 4 meetings per year
(usually during the school day, 10am—12 noon).

Follow the 6 main duties of a trustee:

- Ensure the charity is carrying out its purposes for the public benefit
- Comply with the charity's governing document and the law
- Act in the charity's best interest
- Ensure the charity is accountable
- Manage the charity's resources responsibly
- Act with reasonable care and skill

We recently funded sensory equipment for our Alma classes at Linwood Campus and we are currently raising funds for a chair swing at Springwood Campus.

If you would like further information or an application form, please email Donna Hollingworth, Trust Secretary:

donnahollingworth@linwood.Bournemouth.sch.uk

GOVERNORS UPDATE

Dear Families,

As we reach the end of term, I wanted to share a short update from the Governing Board.

It's been another busy and positive term at Linwood. Governors have recently completed their twice-yearly Link and Named Governor visits, which are always a valuable opportunity for governors to spend time in school, speak with staff and see first-hand the many ways our wonderful students are supported in their learning and development. Governors will be sharing feedback from these visits at the Full Governing Board meeting in June.

The Learning and Achievement Committee (LAC) also met this term, where governors received updates on student progress, attendance, curriculum implementation and wider school developments. These meetings help governors to work closely with school leaders to monitor the quality of education and support continued school improvement.



It's always a pleasure to see the warmth, care and commitment across the Linwood community. The dedication of staff and the achievements of students continue to make governors very proud to be part of the school.

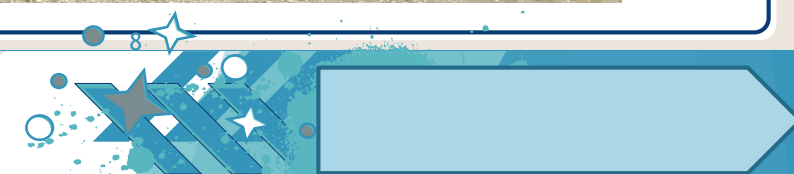
Sue Lay
Chair of Governors

AVON TYRRELL YR 6 RESIDENTIAL

The Year 6 students from Linwood, Springwood and Woodford campuses enjoyed their annual two-night residential trip to Avon Tyrrell, with 23 students attending. The children truly stepped out of their comfort zones; for some, this was their first time away from home, and they embraced the opportunity to try new experiences.

Students paddled in canoes and pedalled across the lake in pedalos, reached new heights on the high ropes, and enjoyed testing their aim in archery. They relished the food at mealtimes, danced the night away at the disco, and toasted marshmallows around the campfire.

It was an absolute joy to take the students away and watch new friendships blossom. Here's to the 2027 trip!



LITTLEWOOD CAMPUS NEWS

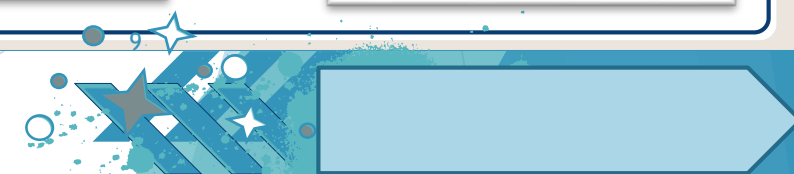
EASTER BONNET PARADE

At the end of last term, Littlewood held an Easter Bonnet Parade for all of our Early Years students. Each child made their own Easter hat during their art session and then walked around the playground to show off their creation. Around 30 family members came to watch and join in the fun! The children performed the Easter songs they had been learning during music with the actions. It was a really lovely morning.



REDWATCH VISIT

Littlewood had a very exciting visit from a fire engine this term! All of the children visited the fire engine and were given the opportunity to try on some of the uniform and spray the hose. The children were very interested in the equipment on the fire engine, especially if you could press it or turn it! Thank you to Redwatch at Poole Fire Station who were amazing and very patient with our students.



TRANSITION TIMES AT LINWOOD CAMPUS

Last term we had a complaint from a local resident regarding the ongoing parking issues at Linwood Campus during drop-off and pick-up times. Specific complaints were as follows:

- Vehicles are not only parking on pavements - parents are actually driving on the pavement forcing pedestrians to move out of the way
- Vehicles parking on double yellow lines - 9 vehicles plus a mini bus were recently counted on both sides of a very busy section of the road
- Drivers performing three-point turns in the road in the presence of moving traffic, creating a collision risk during rush hour school traffic
- Taxis stopping and parking on the road, adding further obstruction

We do understand how difficult transition times are at Linwood Campus, but on reflection of the above we would ask that parents and carers adhere to the following:

- Please **do not** drive or park on the pavements and drive safely
- Although not illegal, Alma Road is too busy for drivers to be executing 3-point turns in front of the school – please drive down the road and turn safely when able, it will only add a few minutes to your journey
- For those students that are able to walk short distances, please park in surrounding roads rather than on double yellow lines outside the school. Even if you hold a disabled badge, you are not entitled to park on double yellow lines where it may cause an obstruction or hazard, such as near school entrances or junctions, of which we have both
- We will be increasing the presence of our senior leaders during transition times to directly challenge unsafe driving in the moment that it occurs
- We have also passed this information onto the BCP transport team to pass on to the taxi firms/drivers and minibus drivers
- If we continue to experience the same problems and it doesn't improve we will follow up with the BCP transport team and request Civil Enforcement Officers to be present during these times

We realise it is not every parent and is a minority, but we have to make everyone aware of the dangers it can pose to our school community. Thank you for your ongoing support with this matter.



SCHOOL INFORMATION

FREE SCHOOL MEAL HOLIDAY VOUCHERS

The UK government's Household Support Fund is continuing to fund food vouchers for families to purchase food during the May half term. These will be available for £15 per week equivalent for each eligible pupil.

The vouchers are provided as supermarket vouchers and a link will be sent via email/text to those that are eligible. If you believe you are eligible for the voucher and do not receive a link, please email: finance@linwood.Bournemouth.sch.uk

For other community food support such as food banks, community fridges and social supermarkets, please click on the link: [BCP Access to Food Map](#)



If you have any concerns regarding child exploitation, please take a look at the [Escapeline](#) website.

It has lots of information on what it is, how it happens and what to do if you suspect your child may be involved. They have also recently opened a helpline if you need advice. It is currently available on Tuesdays and Wednesdays from 10am – 1pm, with plans to expand in the future. For further information, click on the link above.

SEEKING WORK EXPERIENCE OPPORTUNITIES

Linwood Campuses are looking for host businesses who are able to offer short or long term work experiences. If you or someone you know could support a young person (age 14-19) in gaining valuable workplace skills, please get in touch.

To get in touch, please email:
placementcoordinators@linwood.bournemouth.sch.uk

Thank you for your support!



Who are we?

Local Vocals is a mixture of Linwood School students, parents, grandparents and siblings coming together with people from the local Church and other SEN families.

We are a community family that joins as one to sing whilst incorporating some Signalong.

When is Local Vocals?

Day: Thursdays

Time: 3.30pm – 4pm refreshments
4pm – 4.45pm singing

Location: St Luke's Church, St Luke's Road
Winton, Bournemouth, BH3 7LR

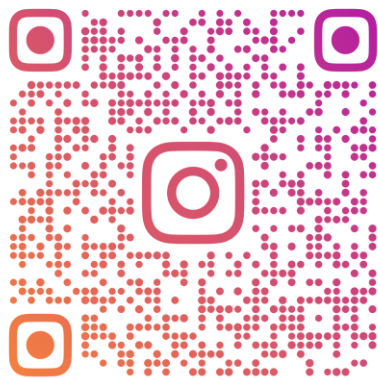
If you would like to find out more, please click on the link and take a look at our video: [Local Vocals](#) or please just turn up and join us!

SCHOOL INFORMATION

SKILLS CENTRE INSTAGRAM ACCOUNT

Linwood Skills Centre Instagram account is a platform for students, in Linwood Media Group - a digital business at The Skills Centre, to publish the content they have created.

QR code on the right for a link to it! Please give us a follow and support our students.



LINWOODSKILLSCENTRE



FACEBOOK FOLLOWERS!

We have now reached over 1.4k followers on Facebook, which is amazing! Thank you to all the parents, carers and friends of Linwood School that follow us.

We include lots of information on there about the school and events that are happening, so please consider giving us a follow if you can! Thank you for your support. [Linwood School Facebook Page](#)



LUNCH ORDERING – NEW PROCESS

Further to the letter that was sent to families on Monday 11th May 2026, this is just a reminder that after half term we will have a new process in place for ordering school lunches.

We are asking that all meals are ordered **by midnight on Thursday** for the following week. If you did not receive the letter, please ask for a copy at your campus reception or alternatively visit our website on Monday 1st June where the updated information will be available. Thank you for your support.



We are pleased to advise that Linwood, Woodford, Springwood and Littlewood Campuses have all passed the Quality Assurance Assessment for the Big Brush Scheme.

The Big Brush Club is a supervised toothbrushing scheme funded by the NHS, teaching children the importance of oral hygiene. If you would like further information on the scheme, please click on the link to their website: <https://bigbrushclub.co.uk/>

If you would like more information we also have a toothbrushing guide on our website: [Toothbrushing Guide](#)

FAMILY SUPPORT – DIARY DATES

STAY AND PLAY

Wednesday 27th May, 10am – 12pm at Littlewood Campus.
No need to book, parking available in the school car park, then walk down to the Littlewood entrance.

WELLNESS GROUP

Every Monday, 9.30am – 11.30am, Linwood Campus Family Room

SPRINGWOOD COFFEE MORNING

Thursday 4th June and 2nd July, 9.30am – 11am at Springwood Campus. All parents and carers welcome regardless of what campus your child attends.

WOODFORD COFFEE MORNING

Tuesday 9th June, 9.30am – 11am at Woodford Campus. All parents and carers welcome regardless of what campus your child attends.

MY CHILD

Wednesday 24th June, 10am – 12pm, Linwood Campus Family Room.
Our monthly coffee morning to share experiences/advice around regulation and engagement strategies.

TALKING DADS

Friday 26th June, 10am - 11:30am, Linwood Campus Family Room
Open to all male carers/relatives.

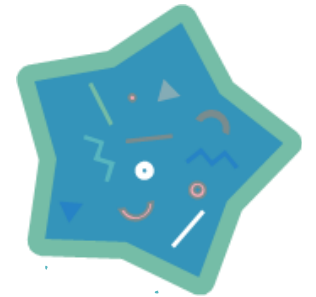
LINWOOD LEAVERS

For families of Linwood Leavers: You should now have the final EHCP's for students moving on from Linwood campuses. This will indicate where your young person is moving onto in September 2026. If you haven't received this information, please contact your LEA ASAP.

Once you have your final setting named on the EHCP, you can now apply for supported transport, if required. Please ensure you read information about applying for this transport as there can be a financial contribution required. Supported transport is applied for and not guaranteed. We did send out a letter to families in April with the information. If you would like to read it, there is a copy on the Preparation for Adulthood and Careers at Linwood page on the website. Please click on the link:

[Transport to Education Placement letter](#)

If you have any questions, please contact the IAG Team on 01202 525107.



THINGS TO DO/EXTERNAL INFORMATION



ACTIVITIES FOR ALL THE FAMILY

The Parks Foundation are an independent charity devoted to enhancing BCPs parks and green spaces for everyone to enjoy.

There are lots of activities planned for the February half term holiday. For further information, click on the link below which will take you to their events page: <https://parksfoundation.org.uk/events/>



RARING2GO!

Please take a look at the Raring2Go! Magazine. There are lots of things to do and places to go. Please click on the link and take a look:

<https://raring2go.co.uk/area/bournemouth/>

THE CHATTERBOX PROJECT

The Chatterboxes is a youth action project run by young people with disabilities aged 11-25 years old from Bournemouth, Poole and other parts of Dorset. Take a look at their most recent magazine:

[The Chatterbox Project](#)



COST OF LIVING HELP

If you are struggling with the cost of living or feel that you need some help, BCP have a dedicated page with information that could help you. If you would like to know more, please click on the link: [Cost of Living Help](#)

BCP COUNCIL INFORMATION DIRECTORY

The information directory has lots of activities, including SEND appropriate activities that families can access over the half term holiday.

Please click on the link for further information:

[BCP Family Information Directory](#)



NATIONAL COLLEGE TRAINING – ONLINE SAFETY

NATIONAL COLLEGE TRAINING – ONLINE SAFETY

Linwood School has signed up for training via The National College that enables staff to train online as well as having our usual face-to-face sessions. The good news is that we can also enrol parents and carers onto the platform to enable you to undertake training that would be specific for parents, such as Online Safety.

We would encourage you to download the National Online Safety App, this way you can view the content just for parents/carers, without having to filter through National College content on the website.

If you would like to enrol, please click on the link: [National College Enrolment](#)

You will need to ensure that you select **Parent/Carer** from the drop down menu when registering.

There is more information on social media apps and sites if you click on the link: [National College - Social Media Apps](#)

- We post weekly updates on our Facebook page, including online safety guides – please give us a follow if you haven't already!
- The NSPCC website is also a great resource for families and their content is for all ages: <https://www.nspcc.org.uk/keeping-children-safe/online-safety/>
- They also have specific content for SEND pupils, specifically [Online safety for families and children with SEND](#) and [Supporting children with SEND to talk to people online](#)

We do hope that you will take advantage of these wonderful resources to help you as parents/carers to discuss social media and online safety with your child/children in order to keep them safe.

The
National
College®



Enter our
Super Draw
 Win a **£1,000 IKEA**
Gift Card
 OR **£1,000 CASH PRIZE**

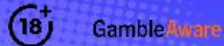




- Tickets cost just **£1 a week**
- Chances to win up to **£25,000**
- Play weekly, or just play the Super Draw!
- Support our fundraising this summer



PLAY NOW:
 Go to
www.bhcoastalottery.co.uk
 Search for: **Linwood School**



See website for Terms & conditions. Enter by 30/05/26.



Thank you to those of you that have registered with easyfundraising. So far, you have raised over **£1,400** for Linwood School which is amazing!

We now have 46 supporters, but we could do with more! With summer round the corner, some of you might be thinking about booking a holiday abroad or even a staycation! TUI, Booking.com and various hotels are all part of easyfundraising. Please think about signing up and help to raise funds for the school.

Registering with them means you can raise FREE donations for us every time you shop online. Over 7,000 brands will donate to us when you use easyfundraising to shop with them – at no extra cost to yourself!

These donations really mount up and make a BIG difference to us, so we'd really appreciate it if you could take a moment to sign up and support us. It's completely FREE and only takes a moment.

Please click on the link below which will take you to our donation page and where you can sign up: <https://www.easyfundraising.org.uk/causes/linwood-school>

Alternatively, you can download their app to your phone. Once you have registered, you use the site to find a retailer, click on them and they will redirect you to the retailer's website.

There are many retailers to choose from such as Argos, eBay, John Lewis, Tesco, Sports Direct, Just Eat, Deliveroo and TUI, to name a few!

