



LINWOOD
TRAINING, SUPPORT & ADVICE

LINWOOD SCHOOL NEWSLETTER

APRIL 2026

OUR VALUES

- Respect
- Trust
- Responsibility
- Harmony
- Excellence
- Support
- Inclusivity
- Positivity





MESSAGE FROM GEMMA TALBOT, EXECUTIVE HEADTEACHER

What a busy term we have had! This term has been filled with hard work, achievements and many wonderful moments across our school community.

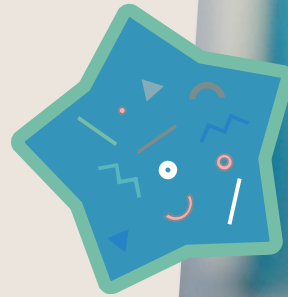
We have had lots of trips out across the campuses which the students have thoroughly enjoyed. World Book Day was a great success with many students and staff members getting involved, we have some wonderful pictures for you to see!

Some of our students at Summerwood Campus completed their mock GCSEs which went really well. Some students also took part in a competition to create a poster for the Children's Partnership Plan Award, creating thoughtful and creative posters to represent what the partnership values mean to them. Four of our students were winners and you can find out more on the next page.

I hope you all have a lovely Easter and are able to spend some quality time with your family.

REMINDER – START OF TERM

Just a reminder that the students return on **Tuesday 14th April 2026** across all campuses. (Monday 13th April is an INSET day)



SUMMERWOOD CAMPUS – SPRING TERM HIGHLIGHTS

As we come to the end of a busy and rewarding Spring term, we are delighted to share some of the fantastic achievements and experiences from across Summerwood Campus.

Careers & Apprenticeships Show – 12th March

A group of Summerwood students attended the BCP Careers and Apprenticeships Show, representing the campus brilliantly. Students engaged thoughtfully with exhibitors, asked mature and insightful questions, and showed genuine interest in a wide range of future pathways. It was an inspiring and valuable experience for all involved.

GCSE Mock Exams

This term, students completed two and a half weeks of GCSE mock exams—16 exams in total. Every student displayed impressive calmness, focus and determination. Their work ethic was outstanding, and we are incredibly proud of them. These mocks have provided excellent preparation not only for those sitting GCSEs this summer, but also for students who will take exams in the years ahead.

Children's Partnership Plan Awards

Students from Summerwood entered the Children's Partnership Plan Award competition, creating thoughtful and creative posters that represented what the partnership values mean to them:

Feeling Happy, Being Safe, Feeling Supported, Being Included, and Feeling Fulfilled.



Four of our students; Leon, Ana, Freya and Joshua were winners of the competition, and their work was showcased at the Youth Celebration Event on Saturday 21st March, alongside entries from schools across the area. Although all students were invited to attend, Ana kindly represented the group and accepted the certificate and prize voucher on their behalf. We are extremely proud of the dedication and creativity shown by every young person involved.





SOUTH COAST MUSIC PARTNERSHIP LEAD SCHOOL

Welcome back to Linwood Radio! If you haven't already, please have a listen to episodes we have recorded this term.

WORLD BOOK DAY
5 MARCH 2026

In this episode, we hear from students live at 'The Big Move' 2026. Students and staff were keeping active and healthy as part of Children's Mental Health week and great fun was had by all! We also acknowledge the importance of books and literature as part of World Book Day on Thursday 5th March. We can't wait to hear about what you have been reading out there!

[World Book Day 2026](#)



If you would like to contact the radio please email:
linwoodradio@linwood.Bournemouth.sch.uk



We have had a true Linwood legend in the Linwood Radio Studio in the form of, the one and only, Gemma Blake.

Gemma is an HLTA at Linwood School who has supported so many of our students (and staff!) over many years.

Thank you for making the time to come in to the studio and talk to us about the music that matters so much in your life. Some great song choices here! Thank you for all you do for all of us here at Linwood School! You are a superstar!

[Desert Island Discs with Gemma Blake](#)



In this episode we explore the upcoming celebration of Easter and enjoy some Easter related music and fun.

We speak to Bristi, a TA at Linwood School, who has shared her love of Indian Bihu music. It was fascinating to learn about music from other parts of the world. Watch this space for more music with an international flavour! Do stay tuned to us here at Linwood Radio.

[Easter and Bihu](#)

LINWOOD SCHOOL CHARITABLE TRUST

ARE YOU INTERESTED IN BECOMING A TRUSTEE?

WHAT IS THE ROLE OF A TRUSTEE?

The Trustees are dedicated to raising money for the school and ensuring funds are used effectively. We are parents, staff and friends of the school who want to further enhance the education and wellbeing of our children and young people, their families and the wider community. We support the school by providing resources, specialist equipment, support for extra-curricular activities and the development of the learning environment.

CAN I APPLY?

Yes! Anyone can apply to be a trustee.

You don't have to have specific knowledge or qualifications, only a keen interest in raising funds for the school and a willingness to help!

You may want to expand your experience in doing something new and challenging and have a willingness to learn and develop new skills.

WHAT WOULD MY ROLE BE AS A TRUSTEE?

Your role is to bring energy, passion and ideas to raise funds for the school. This could be as simple as an Easter raffle to helping organise events such as a bingo or quiz night. You would be expected to get involved in helping organise our school celebration events, one at Christmas and one in the summer term. This could involve contacting companies and shops and asking for prize donations, helping with the set up and management of the stalls and organising the Raffle, amongst other things! If you have any experience in applying for grants to help fund specific projects, this would also be helpful, but training will be given if you would like to get involved in this.

WHAT'S THE COMMITMENT?

All trustees are asked to fulfil the following:
Attendance at meetings - 4 meetings per year
(usually during the school day, 10am—12 noon).

Follow the 6 main duties of a trustee:

- Ensure the charity is carrying out its purposes for the public benefit
- Comply with the charity's governing document and the law
- Act in the charity's best interest
- Ensure the charity is accountable
- Manage the charity's resources responsibly
- Act with reasonable care and skill

We recently funded sensory equipment for our Alma classes at Linwood Campus and we are currently raising funds for a chair swing at Springwood Campus.

If you would like further information or an application form, please email Donna Hollingworth, Trust Secretary:

donnahollingworth@linwood.Bournemouth.sch.uk

GOVERNORS UPDATE

Dear Families,

As we move through the term, I wanted to share a short update from the Governing Board. Recently, some governors had the pleasure of visiting the Lumos, Vita and Alma classes. They were really impressed by the breadth of the Relationships, Sex and Health Education (RSHE) curriculum and by the creativity and skill of the teachers and TAs delivering these lessons.

The Learning and Achievement (LAC) Committee and the Finance and Resources (FAR) Committee have both met and the Full Governing Board (FGB) also held its termly meeting. These discussions help us work closely with the senior leadership team to ensure that all our SEND provision continues to meet students' needs. We're also collaborating on the new satellite provision at Parkfield, which we're very excited about!



It's inspiring to see how everyone at Linwood – staff, students and governors alike – works together to make the school such a supportive and thriving community.

Sue Lay
Chair of Governors

HALF MARATHON COMPLETE!

Congratulations to Ellie Charlton, a member of our Linwood Campus PACE Team, for organising a Half Marathon Walk and raising funds for Linwood School. The walk was successfully completed on Saturday, finishing in just under 4 hours. A huge thank you to everyone who attended and joined in with the walk and to those of you that have already donated; your support means so much. She has already raised over £1,200!



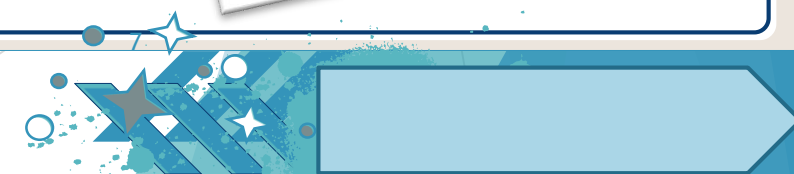
If you would still like to contribute, please click on the link below, every donation is appreciated!

[Ellie Charlton is fundraising for Linwood School](#)

SOARING SUCCESS!!

The students in Vita across Linwood, Springwood, Woodford visited the Aviation museum this term as part of their Spring topic '**How things work**'. The students and staff had a fabulous time exploring the different aircrafts as well as watching planes take off and land at the airport. We have included a selection of the photos, but if you would like to see more, please head to our Facebook page to watch the slideshow! [Facebook Reel](#)

The team at the museum were incredibly welcoming, and it was wonderful to see the children confidently exploring the planes and engaging with the exhibits. If you would like to visit, take a look at their website: <https://www.bamhurn.org/>





EASTER RAFFLE - WINNERS

Thank you to all of you that bought tickets for the Easter raffle. We managed to raise over £500 which we will put towards the funds we are raising for the Springwood Swing.

PRIZES	STUDENT/CLASS
£25 Cash & Galaxy Egg	Sienna, Aquila
Easter Hamper	Pearl, Falcons
Baylis & Harding Signature Collection	Freya, Hedgehogs
Kingston Maurward – The Great Dragon Quest – family ticket	Chloe, Falcons
Kingston Maurward – The Great Dragon Quest – family ticket	Georgia, Blackbirds
Easter Bunny and egg	Arlo, Jellyfish
Bunny door stopper and egg	Tyler, Thunberg
Egg Hunt Kit	Emerson, Seahorses
Egg Hunt Kit	Mason, Badgers
Aero Egg	Sebastian, Rabbits
Fingers Egg	Jesse, Seahorses
Twirl Egg	George, Starlings
Mini Eggs Egg	Teddy, Saturn
Milky Bar Egg	Bleu, Earth
Buttons Mini Eggs	Gustavo, Bocelli

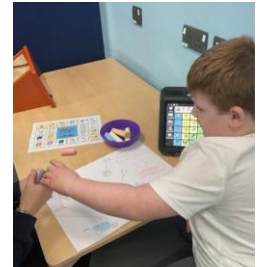
LITTLEWOOD CAMPUS NEWS

Littlewood have been busy learning how to use their communication aids. They are beginning to use them in all areas of the curriculum.



Mason composed sentences about pictures of himself with the creatures during our creature teacher morning and then copied them into his book.

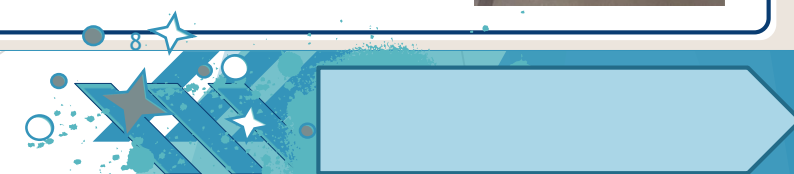
Oliver used his device to request what he wanted the adult working with him to draw using chalk. He wrote 'Karen I want chalk hammer'. Oliver continued asking Karen to draw different tools by finding them on his device.



Littlewood really enjoyed their Creature Teacher visit this term. The staff from Creature Teachers were amazing with our students, they were patient, calm and used simple language making it a relaxing experience so the students could access the animals when and how they wanted to.



Some students just tolerated being in the same room, some looked and others touched or even held them. We are so proud of them!



SCHOOL INFORMATION

FREE SCHOOL MEAL HOLIDAY VOUCHERS

The UK government's Household Support Fund is continuing to fund food vouchers for families to purchase food during the Easter break. These will be available for £15 per week equivalent for each eligible pupil.

The vouchers are provided as supermarket vouchers and a link will be sent via email/text to those that are eligible. If you believe you are eligible for the voucher and do not receive a link, please email: finance@linwood.Bournemouth.sch.uk

For other community food support such as food banks, community fridges and social supermarkets, please click on the link: [BCP Access to Food Map](#)



If you have any concerns regarding child exploitation, please take a look at the [Escapeline](#) website.

It has lots of information on what it is, how it happens and what to do if you suspect your child may be involved. They have also recently opened a helpline if you need advice. It is currently available on Tuesdays and Wednesdays from 10am – 1pm, with plans to expand in the future. For further information, click on the link above.

SEEKING WORK EXPERIENCE OPPORTUNITIES

Linwood Campuses are looking for host businesses who are able to offer short or long term work experiences. If you or someone you know could support a young person (age 14-19) in gaining valuable workplace skills, please get in touch or kindly **SHARE THIS POST!**

To get in touch, please email:

placementcoordinators@linwood.bournemouth.sch.uk

Thank you for your support!

TERM DATES 2027 - 2028

The term dates for 2027 – 2028 are now on the website. If you are thinking of booking a holiday at any point, please check the term dates as we are unable to authorise family holidays/absences unless it is an exceptional circumstance.

[Linwood School - Term Dates](#)



FOOD HYGIENE SUCCESS!

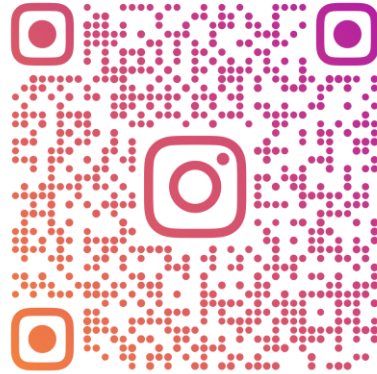
Earlier this month, The Skills Centre kitchen was inspected by the local authority for their food hygiene standards. Congratulations to the catering team who were given 5 stars (highest rating)! All three of our in-house catered sites now have a 5 star rating.

SCHOOL INFORMATION

SKILLS CENTRE INSTAGRAM ACCOUNT

Linwood Skills Centre Instagram account is a platform for students, in Linwood Media Group - a digital business at The Skills Centre, to publish the content they have created.

QR code on the right for a link to it! Please give us a follow and support our students.



LINWOODSKILLSCENTRE



FACEBOOK FOLLOWERS!

We have now reached over 1.4k followers on Facebook, which is amazing! Thank you to all the parents, carers and friends of Linwood School that follow us.

We include lots of information on there about the school and events that are happening, so please consider giving us a follow if you can! Thank you for your support. [Linwood School Facebook Page](#)



PASSENGER ASSISTANT VACANCIES

BCP have vacancies for Passenger Assistants to support children with SEND on their journeys to and from school daily.

You would need to be available (approx.)
7am – 10am and 20.30pm – 5pm daily
Term Time Only

Full training given to include First Aid, Epilepsy, Safeguarding, Autism and Induction, as well as on the job training with existing Passenger Assistants.

Both Male and Female applicants welcomed.

For a Job Description and Application Form please email:

claire.vass@bcpcouncil.gov.uk

Or call 01202 123683 for an informal chat.



WORLD
BOOK
DAY
5 MARCH 2026

WORLD BOOK DAY

The English subject leadership team would like to thank all parents/carers, staff, and students for their wonderful engagement in this year's World Book Day. As 2026 is the Year of Reading, it has been fantastic to see our whole school community come together to celebrate the joy of books.

On Thursday 5th March, staff and students dressed up as their favourite book characters, and a vibrant range of reading-focused activities took place across the school. These included creating themed displays, sharing Sensory Stories, exchanging World Book Day vouchers, reading with students from other classes, and taking part in many other exciting and enriching reading opportunities.

Thank you once again for helping us make World Book Day 2026 a truly memorable celebration of reading. We had some many fabulous photos we've gone over 2 pages!



Littlewood Campus Staff



Springwood Campus Staff



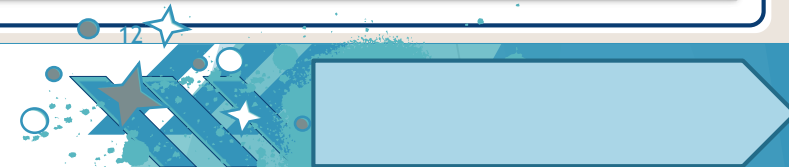
WORLD
BOOK
DAY

5 MARCH 2026

WORLD BOOK DAY CONT'D..



Linwood Campus Staff



FAMILY SUPPORT – DIARY DATES

STAY AND PLAY

Monday 30th March and Wednesday 1st April, 10am – 12pm at Littlewood Campus. No need to book, parking available in the school car park, then walk down to the Littlewood entrance. Please note: there is no Stay and Play in the second week of the holiday.

WELLNESS GROUP

Every Monday, 9.30am – 11.30am, Linwood Campus Family Room

SENSORY DIFFERENCES WORKSHOP

Wednesday 15th April, 11am – 12.30pm, Linwood Campus Family Room. Run by our wonderful Occupational Therapists.

TALKING DADS

Friday 24th April, 10am - 11:30am, Linwood Campus Family Room
Friday 22nd May, online via Teams – contact familysupport@linwood.Bournemouth.sch.uk for more details
Open to all male carers/relatives.

MY CHILD

Wednesday 22nd April and Wednesday 29th May, 10am – 12pm, Linwood Campus Family Room.
Our monthly coffee morning to share experiences/advice around regulation and engagement strategies.

SPRINGWOOD COFFEE MORNING

Thursday 7th May, 9.30am – 11am at Springwood Campus. All parents and carers welcome regardless of what campus your child attends.

EASTER EGG DONATIONS

We have been very lucky to have received a donation of Easter Eggs from a very kind lady called Suroma Halder. In previous years she has organised this as part of a community drive through her volunteering group, but this year she has personally funded the donation. Our wonderful Family Support Team identified those families that may need some extra help over Easter and donated the eggs to families most in need.



Who are we?

Local Vocals is a mixture of Linwood School students, parents, grandparents and siblings coming together with people from the local Church and other SEN families.

We are a community family that joins as one to sing whilst incorporating some Signalong.

When is Local Vocals?

Day: Thursdays

Time: 3.30pm – 4pm refreshments
4pm – 4.45pm singing

Location: St Luke's Church, St Luke's Road
Winton, Bournemouth, BH3 7LR

If you would like to find out more, please click on the link and take a look at our video: [Local Vocals](#) or please just turn up and join us!

The DCF understand that families with disabled children can often feel isolated and alone. Being a parent of a child with additional and sometimes complex medical needs can put an immense strain on the whole family. We support parent/carers by offering a range of services to help them cope with the many difficulties they face. We strive to put smiles on many children's faces and help bring families of disabled children together, creating a network of support.

Our services include:

- **The Windmill** - The heart of our foundation. This Community hub is a multi-purpose space for both children and parent/carers, complete with an accessible changing facility, cinema and sensory room. The Windmill is a safe and welcoming venue for our families to gather, learn and enjoy the ever growing range of activities and services.
- **Accessible for All** inclusive sports and play opportunities including: golf, tennis, cycling, dance, sailing, residential weekends and many more. Helping our children access local facilities, others may take for granted.
- **Early Years** daily stay and play groups, befriending service and advocacy. Supporting families at the start of their journey.
- **Wellbeing Services** a range of activities, including coffee mornings, sewing, crafts, yoga and sports. Bringing our parent/carers together in a supportive environment.
- **Saturday Club** A unique activity club for our children with the most complex needs.
- **Bereavement Support Group** for families who have sadly lost a child.
- **Disability Education** We are passionate about educating people about disability and showing the world how amazing our children are through workshops and community events.

How you can help

- Make a one-off or regular donation - thedcf.org
- Stage a fundraiser
- Volunteer
- Donate unwanted items to one of our local charity shops
- Leave a legacy in your Will
- Get your company to become a Charity Partner

Contact us



Head Office and Shop

695-697 Christchurch Road,
Boscombe, Bournemouth BH7 6AF

The Windmill Wellness Hub
Unit 20A, The Sovereign Centre,
Boscombe, Bournemouth BH1 4SX

The Treehouse
Unit 18, The Sovereign Centre,
Boscombe, Bournemouth BH1 4SX

3 Carbery Row, Southbourne,
Bournemouth BH6 3QR

info@thedcf.org
Tel: 01202 390011
www.thedcf.org



Charity Reg: 1150538

THINGS TO DO/EXTERNAL INFORMATION



Spellbound: The Great Dragon Egg Quest is a magical outdoor adventure where families follow a beautifully illustrated map around a 2.5km trail through the grounds of **Kingston Maurward** in search of 10 mysterious dragon eggs. Along the way, they'll discover unique installations, solve riddles and explore the estate, before meeting the Great Dragon herself...if they dare. There are prizes to be won, lawn games, access to the animal park, sweet treats and many photo opportunities.

Event details:

Dates: 28th March - 26th April

Location: Kingston Maurward Estate, Dorchester

Who it's for: Families with children of all ages, individuals and older adults

Tickets: Family, individual, children's and concession tickets are available, starting at £5

Booking link: [The Great Dragon Egg Quest](#)

It's designed to be a fun, immersive experience that encourages children to get outdoors, explore nature and use their imagination.

SEND SESSION: We also have a special opening on **Saturday 25th of April, 10am – 12pm**, specifically for children with additional support needs. This is to create a more peaceful environment for the children to enjoy the trail. Please be advised, we do have limited wheelchair access to the full 2.5 km loop, given the nature of the listed building and uneven terrain. But an alternative route will be available for those with limited mobility and the animal park, grounds and lawn games are included in the ticket and fully accessible.

Further information about the event and FAQs can be viewed [here](#).

THINGS TO DO/EXTERNAL INFORMATION



ACTIVITIES FOR ALL THE FAMILY

The Parks Foundation are an independent charity devoted to enhancing BCPs parks and green spaces for everyone to enjoy.

There are lots of activities planned for the February half term holiday. For further information, click on the link below which will take you to their events page: <https://parksfoundation.org.uk/events/>



RARING2GO! SPRING 2026

Please take a look at the Raring2Go! Magazine. There are lots of things to do and places to go. Please click on the link and take a look: [Raring2go! Spring 2026](#)

THE CHATTERBOX PROJECT

The Chatterboxes is a youth action project run by young people with disabilities aged 11-25 years old from Bournemouth, Poole and other parts of Dorset. Take a look at their most recent magazine:

[The Chatterbox Project](#)



BCP COUNCIL INFORMATION DIRECTORY

The information directory has lots of activities, including SEND appropriate activities that families can access over the Easter holiday.

Please click on the link for further information:
[BCP Family Information Directory](#)



NATIONAL COLLEGE TRAINING – ONLINE SAFETY

NATIONAL COLLEGE TRAINING – ONLINE SAFETY

Linwood School has signed up for training via The National College that enables staff to train online as well as having our usual face-to-face sessions. The good news is that we can also enrol parents and carers onto the platform to enable you to undertake training that would be specific for parents, such as Online Safety.

We would encourage you to download the National Online Safety App, this way you can view the content just for parents/carers, without having to filter through National College content on the website.

If you would like to enrol, please click on the link: [National College Enrolment](#)

You will need to ensure that you select **Parent/Carer** from the drop down menu when registering.

There is more information on social media apps and sites if you click on the link: [National College - Social Media Apps](#)

- We post weekly updates on our Facebook page, including online safety guides – please give us a follow if you haven't already!
- The NSPCC website is also a great resource for families and their content is for all ages: <https://www.nspcc.org.uk/keeping-children-safe/online-safety/>
- They also have specific content for SEND pupils, specifically [Online safety for families and children with SEND](#) and [Supporting children with SEND to talk to people online](#)

We do hope that you will take advantage of these wonderful resources to help you as parents/carers to discuss social media and online safety with your child/children in order to keep them safe.

The
National
College®



Scan to download on
Apple App Store

Scan to download on
Google Play Store

or search for 'National Online Safety' in the store

Download on the
App Store

GET IT ON
Google Play



Enter our
Super Draw
WIN A HOME ROBOT BUNDLE
OR £1,000 CASH PRIZE



LINWOOD SCHOOL
Charitable Trust

- Tickets cost just £1 a week
- Chances to win up to £25,000
- Play weekly, or just play the Super Draw!
- Support our fundraising this spring

BH Coastal LOTTERY



PLAY NOW:
Go to
www.bhcoastalottery.co.uk
Search for: Linwood School

18+ GambleAware

See website for Terms & conditions. Enter by 28/03/26.



Thank you to those of you that have registered with easyfundraising. So far, you have raised over **£1,300** for Linwood School which is amazing!

We now have 46 supporters, but we could do with more! With summer round the corner, some of you might be thinking about booking a holiday abroad or even a staycation! TUI, Booking.com and various hotels are all part of easyfundraising. Please think about signing up and help to raise funds for the school.

Registering with them means you can raise FREE donations for us every time you shop online. Over 7,000 brands will donate to us when you use easyfundraising to shop with them – at no extra cost to yourself!

These donations really mount up and make a BIG difference to us, so we'd really appreciate it if you could take a moment to sign up and support us. It's completely FREE and only takes a moment.

Please click on the link below which will take you to our donation page and where you can sign up: <https://www.easyfundraising.org.uk/causes/linwood-school>

Alternatively, you can download their app to your phone. Once you have registered, you use the site to find a retailer, click on them and they will redirect you to the retailer's website.

There are many retailers to choose from such as Argos, eBay, John Lewis, Tesco, Sports Direct, Just Eat, Deliveroo and TUI, to name a few!

