



LINWOOD
TRAINING, SUPPORT & ADVICE

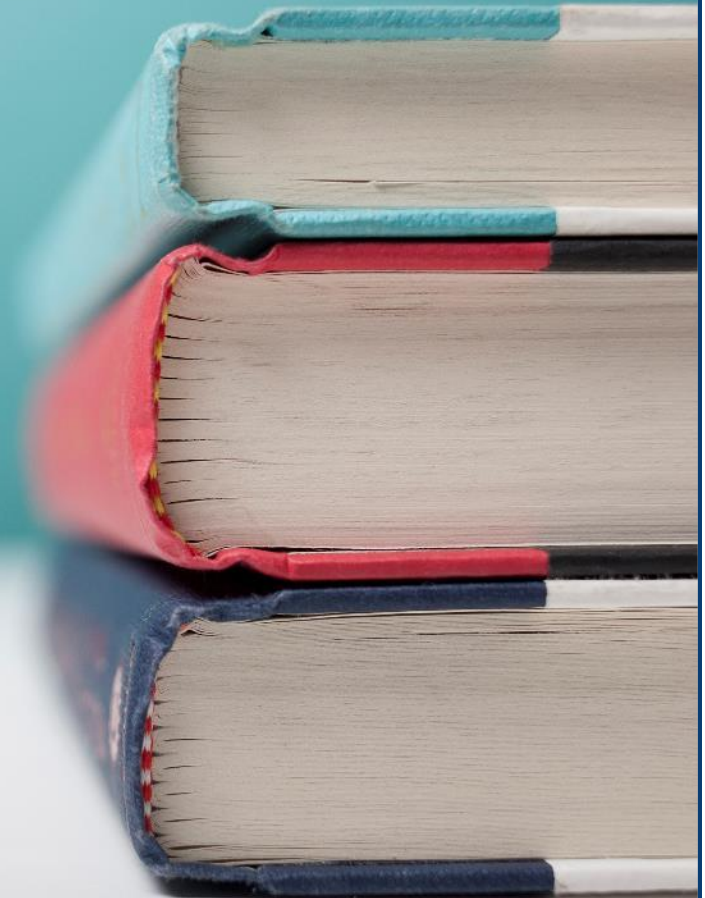
LINWOOD SCHOOL NEWSLETTER

DECEMBER 2025



OUR VALUES

- Respect
- Trust
- Responsibility
- Harmony
- Excellence
- Support
- Inclusivity
- Positivity





MESSAGE FROM GEMMA TALBOT, EXECUTIVE HEADTEACHER

Welcome to the new look newsletter! We hope you like it!

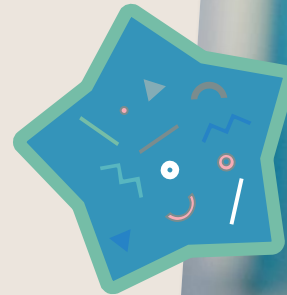
We have had a wonderful half term with lots of Christmas events and celebrations going on. The Christmas Lunches were a huge success again, the students really enjoy their lunch day and it shows! A huge thank you to our catering team for all their hard work!

The Festive Friday event was a joy and thank you for supporting it. Please see more information on the next page.

We hope that however you celebrate Christmas, that you have a restful break and enjoy time with your family.

REMINDER – START OF TERM

Just a reminder that the students return on **Wednesday 7th January 2026** across all campuses.



FESTIVE FRIDAY!

Thank you to everyone that attended Festive Friday at Springwood Campus last week. We had just over 200 footfall, which is fantastic! As always, Santa was a big hit and everyone enjoyed a boogie with DJ Emerald Stardust!

We are currently raising funds for a nest swing at Springwood Campus and with your help we raised just over £1,000 which is a fantastic start to our £5,000 target.

Thank you for continued support at these events, we couldn't do it without you!



LINWOOD WINTER WRITING COMPETITION



Every autumn term, the English Team look forward to announcing the Winter Writing Competition, which is open to all students on all campuses, no matter their writing ability. It is also open to staff to show off their writing skills and model entering a competition to our students.

The English Team were thrilled with the number of entries received this year. Entries included mark-making, Shape Coding, descriptive sentences about a picture, Christmas stories and poetry. The winners were chosen for their engagement, determination and writing skills. All winners received £5 Book Vouchers, which the English Team hope they enjoy spending. The winners were:

- CHI – Lacey
- Linwood Lumos – Paddy, Thunberg
- Linwood Vita – Harry, Seagulls
- Linwood Vita – Peyton, Kahlo
- Springwood – Filip, Saturn
- Springwood – Nathan, Pluto
- Woodford – Connor, Penguins
- Summerwood – Mikey
- Summerwood – Joshua
- Staff - Tom

A big thank you to our Summerwood students who made book marks for runner up prizes.





SOUTH COAST MUSIC PARTNERSHIP LEAD SCHOOL



Welcome back to Linwood Radio! If you haven't already, please have a listen to episodes we have recorded this term.

Hannah Swarbrick (Subject Leader for the Arts) was in the studio for us to hear about the music that has mattered to her in her life as well as learning more about her role as a teacher of Music and Subject Leader for the Arts here at Linwood School.



Don't worry - Miss S is older and a little taller (just a little) than the photograph shows! Thank you once again for listening to Linwood Radio!

[Desert Island Discs with Hannah Swarbrick](#)

In this episode, we talk to Roisin from Post 16 about the new site (very exciting!) as well as getting an insight into the sporting endeavours of Squirrels class who took part in a rugby match and shared some wonderful audio with us. We have also had Freya and Tyler from Summerwood Campus with us in the studio to talk about the building excitement around the upcoming Christmas performance at the Bournemouth Pavilion

[Christmas is just round the corner!](#)

LINWOOD RADIO

We have another episode of Desert Island Discs here at Linwood Radio. This week, we speak with Sara Pezzoni from Foxes class. There is a real international flavour to this episode, and it was genuine pleasure to have Sara here in the studio with us. Thank you so much!



[Desert Island Discs with Sara Pezzoni](#)

Christmas is now SO very close and we bring this year to a close with a BUMPER episode which is full of festive fun.

We have song requests, dedications and, perhaps most importantly, we take the time to CELEBRATE the amazing success of Linwood students and staff following our Christmas performance at the Bournemouth Pavilion. We are SO proud of you! Another night to remember! Linwood - you really did rock the Pavilion!

Do join us back on Linwood Radio in 2026 for more great content and in the meantime, wishing you all a very Happy Christmas.

[Linwood Rocks The Pavilion! - 2025](#)

If you would like to contact the radio please email:
linwoodradio@linwood.Bournemouth.sch.uk



GOVERNORS UPDATE

Dear Families,

As we come to the end of 2025, it's been a busy and rewarding time for the Governing Board. Several governors attended the open afternoon for the impressive new Skills Centre and it was wonderful to see the exciting opportunities it will provide for our students. Governors have also been active across the school, completing Link Governor and Named Governor visits to monitor key areas and support the great work happening on all campuses.

We are delighted to welcome a new co-opted governor to the board and also have a vacancy for a Parent Governor, please see attached letter and application form. If you are interested in joining the board and would like any further information, please contact Hayley, Clerk to Governors: HayleyUpton@linwood.bournemouth.sch.uk



Thank you for your continued support of Linwood School. We wish all our families a restful holiday and a very happy New Year!

Sue Lay
Chair of Governors

LINWOOD SCHOOL NEWS

EXECUTIVE HEADTEACHER MEETS MINISTER AND LOCAL MP

Gemma Talbot, Executive Headteacher, was recently invited to attend an event with local MP Tom Hayes and the Minister for Children and Families, Josh MacAlister.



It was a great opportunity to hear directly from the Minister about current Government priorities and to represent SEND children and their families.

POST 16 INFORMATION

DEADLINE FOR FINAL OPTIONS (ALL LEAVERS)

All leavers should have applied for their post 16 or post 19 placements by the Christmas break. If you haven't, please think about applying during the holiday so that you don't miss out on your preferred placement. If you have any queries, please email: adelemiller@linwood.Bournemouth.sch.uk and she will get back to you on her return in January.

COMING SOON

In the Spring term the IAG Team are running a new event: Nurture Pathways. This is for families seeking a social care support package for their young person, post 19. We will invite families and their young people to the event to explore support that social care provision can provide.



SUMMERWOOD CAMPUS NEWS

BULB PLANTING AT CYRIL PARK

Students from Summerwood were delighted to join Councillor Carr-Brown in a community initiative to brighten up Cyril Park.

As part of a wider project encouraging councillors to plant spring bulbs in communal spaces across Bournemouth, our students rolled up their sleeves on a sunny Friday afternoon, equipped with trowels and gardening gloves.

Led by Cllr Carr-Brown, they worked enthusiastically to prepare the soil and plant a beautiful mix of spring bulbs near the Cyril Road entrance. The students thoroughly enjoyed the experience and are looking forward to returning in the spring to see their hard work bloom into vibrant flowers.



WORK EXPERIENCE PLACEMENTS

This term, it has been inspiring to see our students exploring potential career paths through work experience placements. With guidance from our Workplace Coordinators, students have reflected on their current skills and identified areas they'd like to develop.

They have visited a variety of workplaces, including Bournemouth Aviation Museum, Venture, Tops Nursery, Avonwood Primary, and The Junction at Broadstone. Each placement has been approached with enthusiasm and professionalism, and students have gained valuable skills and confidence along the way.

We are excited to announce that even more placements will begin in the new year, and our students can't wait to take on these new opportunities!

BCP CYPPP COMPETITION

Our students have been showcasing their creativity by taking part in the BCP CYPPP (Children and Young People's Partnership Plan) competition. They have produced an inspiring range of entries, including posters, hand-drawn artwork, poems, and more—all centred around the important themes of feeling happy, safe, supported, included, and fulfilled. This initiative has given students a wonderful opportunity to express their ideas and values through creative mediums, highlighting what truly matters to them in their school and community life. We can't wait to hear the results!



POST 16 SKILLS CENTRE

On Wednesday 12th November, the new Skills Centre was officially opened by the Mayor of Poole.

We had lots of BCP colleagues attend who have been involved in the project, along with parents and the students. The students coped really well and they were fantastic!

Well done to Lee, Karen and the Skills Centre team for making the afternoon a great success!

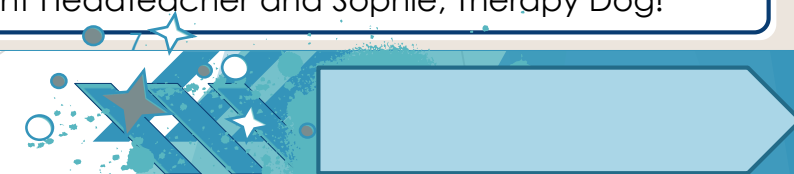


LINWOOD MEDIA GROUP IS NOW ON INSTAGRAM!

Our Post 16 Linwood Media Group are now on Instagram, please give them a follow: [Instagram - Linwood Skills Centre](#)



Picture above from L-R: Cllr Richard Burton, BCP Council Portfolio Holder for Children and Young People; Gemma Talbot, Executive Headteacher; The Mayor of Poole, Cllr Mark Howell; Lee Rockingham, Assistant Headteacher and Sophie, Therapy Dog!



SCHOOL INFORMATION AND UPDATES

LINWOOD CAMPUS

ROAD CROSSINGS

Please can we remind parents and carers to use one of the two crossings available when crossing Alma Road. Our staff are expected to use the crossings at all times and we teach students road safety on a daily basis. They learn how to find a safe place to cross and that you should always use road crossings if they are available.

School drop off and pick up times are extremely busy and the volume of traffic increases during these times. It only adds on a minute or so for you to use one of the crossings, which in turn keeps you, our students and road users safe. It would be really supportive if you can be mindful of this and use the crossings when at the school and in the community. Thank you for your continued support.

SCHOOL LUNCHES

As of January, if your child has a school lunch, we will require you to book it via ParentMail each week or half termly. Our catering team make all the school meals from scratch and rely on the booked numbers to make the correct amount of food to reduce wastage. We do send out a text message every week as a reminder, if you are not receiving them, please contact reception to ensure we have an up-to-date mobile number. If you do not book a meal and they do not have a packed lunch, you will receive a phone call and be asked to bring in a packed lunch for your child. Thank you for your understanding.

FREE SCHOOL MEAL HOLIDAY VOUCHERS

We will be contacting you shortly about the vouchers that support pupils through the school holiday period. These will be available for £15 per week equivalent for each eligible pupil. This funding comes from national decision making and funding.

The vouchers are provided as supermarket vouchers and a link will be sent via email/text. If you believe you are eligible for the voucher and do not receive a link, please email:

enquiries@linwood.Bournemouth.sch.uk



WE ARE A NUT-FREE AND ALLERGEN AWARE SCHOOL

Please can we remind you that we are a **nut-free and allergen aware school**.

Whilst it is impossible to guarantee that no nuts will be brought into school, those students and staff members with nut allergies deserve to know that we are not knowingly doing anything to create a risk to their health. Please **do not send in any food containing nuts onto the school premises at any of our campuses**.

Our Catering Team have very tight procedures to ensure that school lunches do not pose any allergen risk; we must also all do our bit to protect others.

SCHOOL INFORMATION

STUDENT ABSENCES

Just a reminder that all student absences should be reported on the dedicated absent line at the campus that your child attends. Please report the absence by 8am latest if possible as this helps us with staffing. Please leave their name, class and reason for absence, such as sickness, temperature, cough etc. Please do not say they are unwell as we need to know what they are unwell with, such as vomiting, cough, temperature etc.. Please **DO NOT** email the teacher directly to report an absence. If the teacher is absent for any reason, then the email will not be picked up. Telephone numbers for each campus as below:

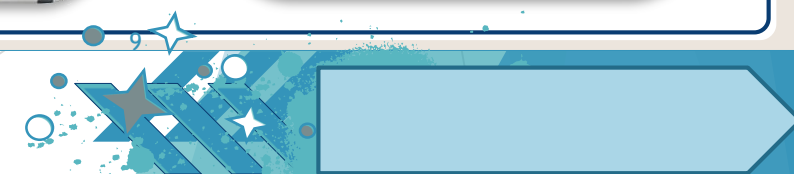
CAMPUS	TELEPHONE NUMBER
CHI	07399 335963 (Sharon Jenkin) or 01202 932220
Linwood Campus	01202 525107
Littlewood Campus	01202 830845
Springwood Campus	01202 592410
Summerwood Campus	01202 447970
The Skills Centre	01202 447979
Woodford Campus	01202 592415

Thank you for your support.

LITTLEWOOD CAMPUS

CHRISTMAS SINGALONG

On Tuesday and Thursday last week, Littlewood invited parents in for the first time to join in our Christmas singalong. We kept the structure of our assembly and performed our singing that we have been practicing in our music sessions. We had lots of fun, singing, signing and playing the bells. As you can see for the pictures, a good time was had by all!



FAMILY SUPPORT – DIARY DATES

SENSORY DIFFERENCES WORKSHOP (in place of coffee morning)

Thursday 8th January, 9.30am – 11am, Springwood Campus. Led by our wonderful OT Team, providing information on different sensory needs and what we can do to support our young people to meet their sensory needs.

WELLNESS GROUP

Every Monday starting on 12th January 2026, 9.30am – 11.30am at Linwood Campus Family Room

LOCAL VOCALS COFFEE MORNING

Thursday 15th January, 10am – 12 noon, Linwood Campus Family Room. Come along to find out more information about Local Vocals and the positive impact it has for both our students and parents/carers.

SENDIASS COFFEE MORNING

Friday 16th January, 10am – 12pm, Linwood Campus Family Room. Come along to learn more about SENDIASS and how they can support our families. Will be joined by a SENDIASS Parent Champion.

MY CHILD

Friday 23rd January, 10am – 12pm, Linwood Campus Family Room. A chance to meet other parents and share experiences/advice around regulation and engagement strategies.

TALKING DADS

Friday 30th January, 10am - 11:30am, online via Teams. Contact familysupport@linwood.bournemouth.sch.uk for the link. Open to all male carers/relatives.

COFFEE MORNINGS

Springwood Campus – Thursday 5th February, 9.30am – 11am.
Woodford Campus – Tuesday 10th February, 9.30am – 11am.
Parents/carers are welcome to attend coffee mornings/workshops at any campus.

Any questions, please call the Family Support Team on 01202 525107.

A big **thank you** to the Wellness Group last week who took the time to help wrap the presents for Santa's Grotto at the Festive Friday event. We couldn't do it without you!

PUPIL PREMIUM STATEMENT

We have now published our most recent Pupil Premium Strategy Statement on the website. It details our use of pupil premium funding and outlines our Pupil Premium Strategy. For further information, please click on the link: [Linwood Pupil Premium Strategy 2025/26](#)

PARENT/CARER SURVEY

Thank you to those of you that took the time to complete our annual parent/carer survey. It really helps us to see what we are doing well and what we can improve on. We would like to address some of the items from the survey which stood out to us.

- **Communication needs, independence skills, wider personal development**

Some of you did not know about how your child was progressing with the above skills. You should be receiving weekly Evidence for Learning updates, we hold parent's evenings twice a year, usually November and March, EHCP reviews and we send home a yearly annual report. We also have an open door policy for our parents and if you feel you require more information about your child's progress, please email the class teacher, or we could arrange to meet with you if you prefer.

If you require any further help with accessing Evidence for Learning, please email in the first instance with the name of your child, their class and your name. Please email exams@linwood.Bournemouth.sch.uk and they will be able to help you.

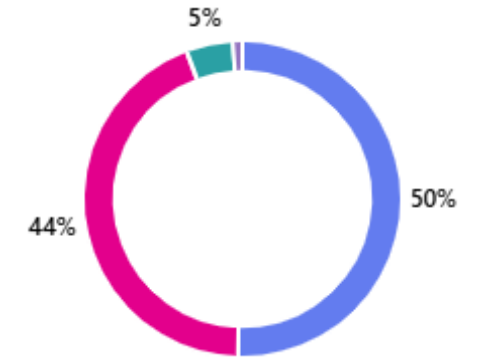
- **Uniform change to reflect a more inclusive, active ready uniform**

Most of our parents and carers were very happy with the change due their child feeling more comfortable, particularly those with sensory issues. Some said that it saves money and makes it easier for their child to dress independently.

Some parents said their child preferred the old style uniform as it prepares them for the working world and adult life, which we don't disagree with. Please be assured that if your child prefers to wear a more structured uniform, they can continue to do so.

- **Behaviour and self-regulation**

As a school, we work really hard with our students to teach them ways to cope when they become dysregulated, 50% strongly agreed and 44% agreed. We are delighted that the majority of parents and carers feel that we help the students to accomplish this.



The survey also showed that the students have developed positive relationships with the staff as well, which in turn helps with implementing bespoke strategies to help with dysregulation.

We do try to work with parents and carers to help with strategies and ideas that may also help at home. If you feel that you need some help and guidance with your child's dysregulation, please contact us and we will be happy to help.

We had some wonderful comments and compliments about the staff and school, so thank you for taking the time to do this. We have passed on all the comments to our campus leads who have cascaded them to the relevant staff – thank you!

THINGS TO DO/EXTERNAL INFORMATION



RARING2GO! WINTER 2025/26

Please take a look at the Raring2Go! Magazine. There are lots of things to do and places to go. Please click on the link and take a look: [Raring2Go! Winter 2025/26](#)



FAMILIES DORSET MAGAZINE

What's on for families in Dorset over the Christmas holiday?

Please click on the link below to access more information and the latest issue of Families Dorset:

[Families Magazine - Nov/Dec 2025](#)

HOUSEHOLD SUPPORT FUND

Citizens Advice BCP manages some of the Household Support Fund (HSF) on behalf of BCP Council. This includes issuing grants to provide short-term financial support for low-income households struggling with food and energy.

If you think you may be eligible and would like further information on how to apply, please click on the link below:

<https://citizensadvicebcp.org.uk/projects/household-support-fund/>



ACTIVITIES FOR ALL THE FAMILY

The Parks Foundation are an independent charity devoted to enhancing BCPs parks and green spaces for everyone to enjoy.

There are lots of activities planned for the Christmas holidays. For further information, click on the link below which will take you to their events page:

<https://parksfoundation.org.uk/events/>

BCP COUNCIL INFORMATION DIRECTORY

The information directory has lots of activities, including SEND appropriate activities that families can access over the Christmas holiday.

Please click on the link for further information:

[BCP Family Information Directory](#)

THE CHATTERBOX PROJECT

The Chatterboxes is a youth action project run by young people with disabilities aged 11-25 years old from Bournemouth, Poole and other parts of Dorset. Take a look at their most recent magazine: [The Chatterbox Project](#)

THINGS TO DO/EXTERNAL INFORMATION

SIBLING SUPPORT

Families with children that have special educational needs and disabilities often have other brothers and sisters in the family who may also need support from time to time. If you feel that any of your children could do with some support, please take a look at the following:

Sibs

Sibs support people who grow up with or have grown up with a disabled brother or sister.

<https://www.sibs.org.uk/>



Provides holistic support that addresses the unique challenges young carers between the ages of 5-25 face.

<https://www.mytimeyoungcarers.org/>



Diverse Abilities launched STARS – to help these Supportive, Thoughtful, And Resilient children and young people.

<https://diverseabilities.org.uk/stars>

BCP – PASSENGER ASSISTANTS WANTED

BCP has asked to advertise the following vacancy. Please pass on to anyone you may know that might be interested:

Passenger Assistants

To support children with SEND on their journeys to and from school daily.

You would need to be available (approx.) 7am – 10am and 2.30pm – 5pm daily, Term Time only

Full training given to include First Aid, Epilepsy, Safeguarding, Autism and Induction, as well as on the job training with existing Passenger Assistants.

Both Male and Female applicants welcomed.

For a Job Description and Application form please email:

claire.vass@bcpcouncil.gov.uk or call: 01202 123683 for an informal chat.



FACEBOOK FOLLOWERS!

We have now reached over 1,000 followers on Facebook, which is amazing! Thank you to all the parents, carers and friends of Linwood School that follow us.

We include lots of information on there about the school and events that are happening, so please consider giving us a follow if you can! Thank you for your support. [Linwood School Facebook Page](#)

NATIONAL COLLEGE TRAINING – ONLINE SAFETY

NATIONAL COLLEGE TRAINING – ONLINE SAFETY

Linwood School has signed up for training via The National College that enables staff to train online as well as having our usual face-to-face sessions. The good news is that we can also enrol parents and carers onto the platform to enable you to undertake training that would be specific for parents, such as Online Safety.

We would encourage you to download the National Online Safety App, this way you can view the content just for parents/carers, without having to filter through National College content on the website.

If you would like to enrol, please click on the link: [National College Enrolment](#)

You will need to ensure that you select **Parent/Carer** from the drop down menu when registering.

There is more information on social media apps and sites if you click on the link: [National College - Social Media Apps](#)

- We post weekly updates on our Facebook page, including online safety guides – please give us a follow if you haven't already!
- The NSPCC website is also a great resource for families and their content is for all ages: <https://www.nspcc.org.uk/keeping-children-safe/online-safety/>
- They also have specific content for SEND pupils, specifically [Online safety for families and children with SEND](#) and [Supporting children with SEND to talk to people online](#)

We do hope that you will take advantage of these wonderful resources to help you as parents/carers to discuss social media and online safety with your child/children in order to keep them safe.

The
National
College®



Scan to download on
Apple App Store



Scan to download on
Google Play Store

or search for 'National Online Safety' in the store



Enter our
Super Draw
**WIN A £3,000
 CHRISTMAS
 CASH BONUS**





- Tickets cost just £1 a week
- Chances to win up to £25,000
- Play weekly, or just play the Super Draw!
- Win a £3,000 Xmas Cash Bonus!



PLAY NOW:
 Go to
www.bhcoastalottery.co.uk
 Search for: **Linwood School**

18 GambleAware

DONATION SUPPORT

On Saturday 29th November we had a supporter win £25 on the BH Coastal Lottery. This person very generously donated the money to Linwood and wished to remain anonymous. Thank you supporter! It is much appreciated!



Thank you to those of you that have registered with easyfundraising. So far, you have raised over **£1,400** for Linwood School which is amazing!

We now have 40 supporters, but we could do with more! With summer round the corner, some of you might be thinking about booking a holiday abroad or even a staycation! TUI, Booking.com and various hotels are all part of easyfundraising. Please think about signing up and help to raise funds for the school.

Registering with them means you can raise FREE donations for us every time you shop online. Over 7,000 brands will donate to us when you use easyfundraising to shop with them – at no extra cost to yourself!

These donations really mount up and make a BIG difference to us, so we'd really appreciate it if you could take a moment to sign up and support us. It's completely FREE and only takes a moment.

Please click on the link below which will take you to our donation page and where you can sign up: <https://www.easyfundraising.org.uk/causes/linwood-school>

Alternatively, you can download their app to your phone. Once you have registered, you use the site to find a retailer, click on them and they will redirect you to the retailer's website.

There are many retailers to choose from such as Argos, eBay, John Lewis, Tesco, Sports Direct, Just Eat, Deliveroo and TUI, to name a few!

